

**NOW CAN
ADJUST TIRE
'CONTACT'
ANGLES**

FINALLY FRONT & REAR ONGOING

IMPROVE TRACTION & EDGE TIRE WEAR

Camber, Caster (and extraToe) Kits

AUDI TO VOLVO - Including Mercedes 'AMG', BMW 'M'

#502626-1K W216, W221 incl AMG ('06-'14)

K-MAC - BUSH EXTRACTION TOOL INCLUDED
(No need Lower Arm Removal / Hydraulic Press)

FOR THE 1ST. TIME

REAR CAMBER (& EXTRA TOE) ADJUSTABLE BUSHINGS

Precisely Adjustable - Single Wrench

(accurately under load - direct on alignment rack)

• **WITH 2½ TIMES THE LOAD BEARING AREA** •

TOOLS REQUIRED

WRENCH: 2 x 18mm, 2 x 16mm

SOCKET: 1 x 18mm E, 1 x 18mm (Ext.), 1 x 12mm (Multi Spline)

Installation should be carried out by a qualified person

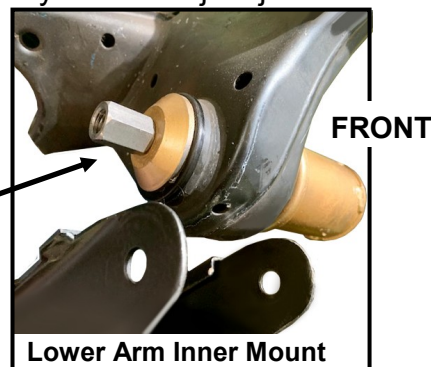
A. Install with vehicle on 4 post hoist or car ramps to aid reconnection of inner bolts step G.

B. CAMBER - LOWER ARM INNER BUSHES

Securely position jack under a lower control arm (towards inner end). Then raise (only sufficient) to take up / support load (for ease of bolt removal make sure load is even on both arm forks).

C. REMOVE THE INNER BOLT (initially halfway and re-adjust jack - up or down if necessary so minimal load on bolt to assist removal).

D. Slowly lower jack - sufficient only for end of arm to expose the bush in frame. Then install the K-MAC threaded rod tool **FROM FRONT** (as in Pic) and large washer on REAR to extract bush 18mm ext. socket (can be tight - use impact wrench if available).

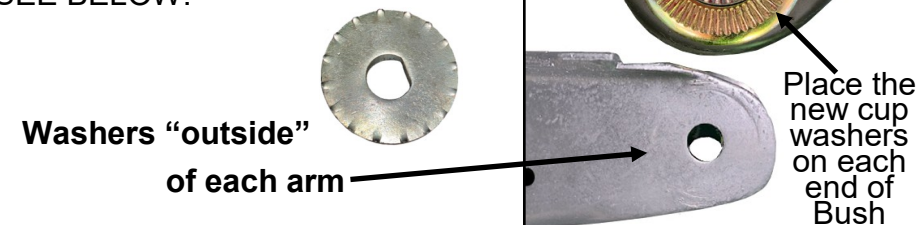


E. Insert the new K-MAC elastomer bushes. Now lubricate the steel inner bushes (only) with silicone grease supplied and insert.

F. For ease of bolt entry preferably rotate bush 'D' holes to 6 o'clock position. (Flat then is to bottom).

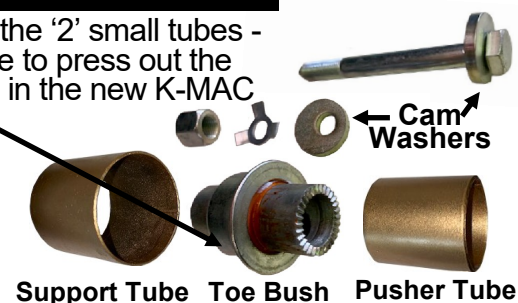
G. Place the new cup washers on each end of the elastomer bushes as in pic. Then jack to raise arm to line up holes (use "pointed end" screwdriver on opposite side of hole to accurately align while inserting the K-MAC 'D' shape bolts - flat to bottom).

NOTE: "TOOTH" WASHERS:
Place under head of bolt first - then prior to tab lock washer and nut
SEE BELOW:



H. EXTRA TOE - SMALL ARMS FRONT OF SUBFRAME

Unbolt arms - Then bench vice and the '2' small tubes - Large tube to support arm small tube to press out the OEM Toe bush on each side. Press in the new K-MAC bushes. (till "EVENLY" centered)
NOTE: Can be pushed in, in any offset position!



Reconnect Toe arms (K-MAC bolt head to Rear) with cam washers supplied and 'tab' lock washers under each nut

WHEEL ALIGN ("WITH TIRES ON SLIDE PLATES")

SIMPLY ROTATE BOLT HEADS - UNIQUE K-MAC PATENTED SYSTEM
(allowing accurate adjustment "under load" direct on Alignment turntable)

Make sure nuts are loose and rotate the bolt heads for both Camber and Toe. Once required settings obtained, hold head of bolts in this position and tighten the nuts to **110Nm (80ft/lbs)**

Then fold one of the 3 lock Tabs that lines up with the side of a nut

ESSENTIAL RECHECK MAKE SURE 4 NUTS ARE FULLY TIGHT

(Loose Nuts Cause Noise Noticeable Camber Change)

CHASSIS QUICK REFERENCE ALL '68 -'24 Incl. AMG, Black Series

'M' P/N'S - FOR "FRONT CAMBER" ONLY - QUOTE -1i After P/N (\$345)

PAGE	FRONT (CAMBER & CASTER)	● "EXTRA" Performance driving / Track days STRUT TOPS. see below ADJUST (Front Upper 'A' Arms. - Page 7-11)	\$ US
8	'10-'18 W212 E63, 65/S AMG #503116M. 4MATIC W212 #503716 M \$595	W212, E200-550. C218, 63, 65 AMG 4MATIC C218	#502916 M \$595 #503616 M \$595 #502916-2L \$545 #502916-3L \$545
7	'15-'24 W205 / A / C / S, **C180 - C350 4MATIC - **C200 - C450 / C43 AMG C63/AMC, 63S AMG C180 - C350 4MATIC - C200 - C400e / C43 AMG	AMG GT4 Door ALL 43 to 63/S #503416-3	#502816 M \$595 #503416 M \$595 #503316 M \$595 #505116 M \$595 #505216 M \$595
7	'16-'22 4MATIC - **EQC, W213 E43/53/63, E200-450, **C238, **C253/X GLC, **C257, AMG		#503416 M \$595 #502816 M \$595 #503016 N \$695 #504516 P \$795
	'13-'22 **W213 E200-350, **C217, **C238, **C253, **C257		
	'13-'20 W222/S, 63/65 AMG, Maybach ('15-'20).		
	'21-'24 W223, S350-680, AMG 63, Maybach		
	'22-'24 C254/X GLC incl. AMG 43, 63		#505216 M \$595
	'22-'24 W206 C180-350 (#505116M \$595).	ALL 4MATIC / 63 AMG	#505216 M \$595
	'22-'24 W214 E200-450 (#505116M \$595).	E43 AMG	#505216 M \$595
7	'02-'20 R172, W204, C207, AMG, Black #502616M (C209 AMG, Black #503516M), C209 270-500	Stage 2 (Street/Race)	#502216 M \$595
	● Also Adjustable Strut Top Mounts - for C209 'Black' Series (only)	Stage 3 (Full Race)	#502616-2 L \$545
	● Also Adjustable Strut Top Mounts - If Coil Spring Suspension	Stage 2 (Street/Race)	#502616-3 L \$545
	W204/X, C207/A Incl. AMG, 'Black' Series	Stage 3 (Full Race)	#503016-2 L \$545 #503016-3 L \$545
9	'02-'20 W203/A, W211, C209 (CLK 270 - 500), C219, R171, R230, R231		#502216 M \$595
9	'93-'10 R170, W202, C208 / A	Incl. Chrysler Crossfire	#502016 J \$380
9	'96-'09 W210 #502116M \$595	"4MATIC" - W211/S, W216, W220, W221	#502416 M \$595
9	'06-'14 W216, W221 #502316M \$595	'00-'06 W215 CL, W220/S	#502516 M \$595
9	'91-'99 W140, Maybach ('97-'12) Have adjustment KMAC doubles adj. range		#501916 M \$545
10	'82-'01 W124, R129, W201 Have adjustment KMAC doubles adj. range		#501716 K \$480
	● Also (124, 129) Adjustable Strut Top Mounts (#501716-2 L, #501716-3 L)		
10	'77-'91 W123, W126 Camber only Have adjustment KMAC doubles adj. range		#501616 H \$320
REAR & Extra TOE : Updated Bushings 6 Multi link rear arms Page 14 Upper Camber arms (and extra Toe) Page 12-14			
12	'14-'24 Coil Susp. W205 (incl. C43 *C63/S) W213, C238, 253, 257 (#502226K) AIRMATIC (Not AMG)		#502326 K \$480
12	'14-'24 W205 (*C63/S Coupe) AND ALL ABOVE AMG & GT 4 DOOR		#502326-1K \$480
12	'21-'24 W206/e C180 - C300		#503126 K \$480
12	'00-'18 W204 incl. AMG, Black Series, C207, W212, W215, C218, R231		#502126 K \$480
12	'01-'11 W211, C219, R230 Airmatic incl. AMG #502526K, W211, C219, R230 (Coil Susp / 4matic)		#502126-1 K \$480
12	'14-'24 W222 incl. S63, 65, C217, Maybach ('15-'20) #502626L W223, Maybach		#503726 L \$545
12	'06-'14 W216, W221 incl. AMG		#502626-1 K \$480
12	'01-'20 C209 / A ('01-5/04), R171, R172 (33mm Lower Arm/Inner bush)		#502026 H \$320
12	6/04-09 C209 / A (Black Series 501526J) (51mm " " " " ")		#501926 K \$480
13	'91-'06 W140, W220 (Maybach '02-'12 #501726K) (51mm " " " " ")		#501626 K \$480
13	'82-'10 W124/C, R129, R170, W201, W202, *C208, W210, Chrysler Crossfire (300C, Charger #502726 K) *A208 Convertible		#502026 H \$320 #501426 i \$345
13	'04-'07 W203 (from A555897, F457375, R131145) (51mm Lower Arm/Inner bush)		#501926 J \$380
13	'00-'04 W203 (33mm " " " " ")		#502026 H \$320
14	'68-'91 R107, W114, W115, W116, W123, W126		#501826 J \$380
SUV, SPRINTER, VITO, A/B/CLA/GLA AMG			
SUV	**W167 / X, V167 GLE/GLS, C293	FRONT	REAR
	**W166 / X, C292	#504216 P \$795	#504226 N \$695
	**W164 / X, ML W251 } Front also replaces / strengthens the (costly) Lower / Inner Rear bushes!	#504016 N \$695	#504126 N \$695
	W163 (FRONT - Camber only)	#503816 N \$695	#504126 N \$695
		#503916 i \$345	#503926 J \$380
Sprinter	W910 ('19-'24) incl. 'E' Strut Mounts Camber & Caster W906 Camber & Caster '4' lower arm bushes) W903 ('96-'14) Camber & Caster '4' lower arm bushes)	#505816 L \$545	
		#505716 K \$480	
		#505616 K \$480	
Vito	W447, 448 ('14-'24) incl. 'E' Strut Mounts Camber & Caster	#506016 L \$545	#505226 K \$480
Metris	W639 ('03-'14) Lower arm bushes Camber & Caster	#505116 K \$480	#505126 K \$480
Valente	W638, W639 ('96-'14) Front Camber only (See Page 11)	#120216 D \$145	#505126 K \$480
2018-2024 W177/A35/45/S, C118 CLA, 247B/X GLA STRUT TOPS (Precise Camber & Caster) STAGE 2 (STREET/RACE) STAGE 3 (FULL RACE)			
	Extra Camber & Caster (Race days) lower arm (inner)	#506216-2 L \$545	
		#506216-3 L \$545	
		#506216-4 M \$595	
2012-2020 W176/A45, C117 CLA, B246, X156 GLA STRUT TOPS (Precise Camber & Caster) STAGE 2 (STREET/RACE) STAGE 3 (FULL RACE)			
	Extra Camber & Caster (Race days) lower arm (inner)	#506116-2 L \$545	
		#506116-3 L \$545	
		#506116-4 K \$480	
	REAR ('13-'20) lower arm Camber (& extra Toe) bushes. Trail Arm front bushes - Contain side load / G Forces Updated bushes (8) - With above kits eliminates rear end flex.	#120216 D \$145	#506126 K \$480 #506128 K \$480 #506128-1J \$380



BOLT-ON ALIGNMENT KITS

FOR MASS PRODUCED AUTOS

Worlds largest range AUDI to VOLVO

MERCEDES - REAR Camber & Toe

W216, W221 incl AMG ('06-'14)

#502626-1K

FRONT - CAMBER & CASTER KIT ALSO MANUFACTURED

K-MAC - ADJUSTMENT FOR THE 1st. TIME (Precise Single Wrench)

Tires are expensive - Resolve costly premature edge tire wear - Improve traction - Finally, correctly resolve steering pull with ongoing adjustment for curb knock damage, altering height through load carrying or lowering, fitting wide profile tires / wheels.

A REVOLUTION IN SIMPLIFIED ADJUSTMENT

BUSH ROTATES INSIDE (stationary) OUTER SLEEVE means unlike other brands bushes can be inserted in any position! (not just one offset position of adjustment) allowing therefore precise change of adjustment. SIMPLY BY ROTATING BOLT HEADS.

K-MAC UNIQUE PATENTED INTERLOCKING BOLT / BUSH DESIGN

GENUINE K-MAC (Rear Camber with "extra" Toe adjustment)

1. Unlike upper Camber arms K-MAC are designed to adjust lower arms.

Advantage is clearance top of tire to outer fender is maintained when wanting to reduce inner edge tire wear. Essential if wide profile tires / wheels fitted. Also K-MAC kits include extra Toe adjustment to compensate for the new Camber facility.

2. Unlike virtually all other brands — we do not use solid metal to metal spherical bearings which transmit road noise, uncompromising ride harshness and prematurely pound out. Instead patented design long life elastomer bushings (with twice the load bearing of OEM bushings) allowing also improved handling response.